

# Silhouette

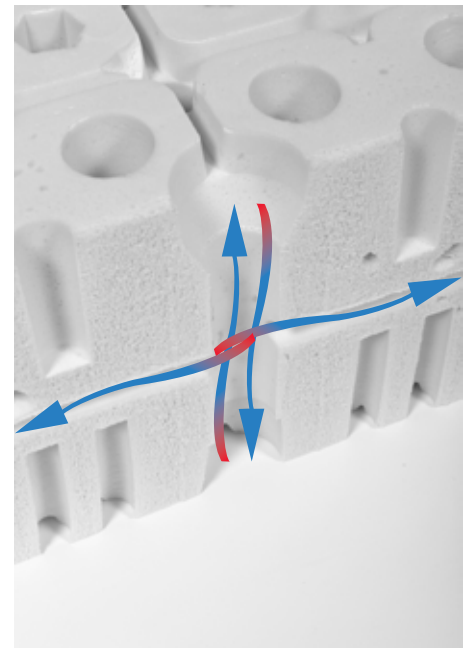
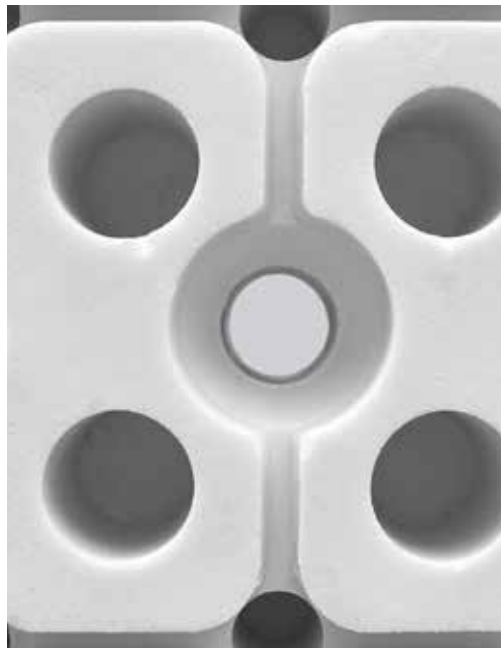
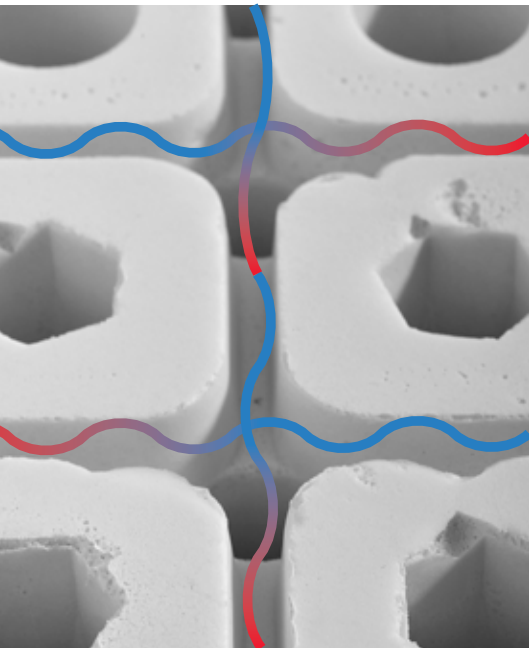


***multi-comfort 7-zoned mattress***

*Latexco's development and innovation team is permanently in search of further improvements for the Latexco sleeping products. The newest development is the multi-comfort 7-zoned Silhouette mattress. Silhouette is designed according to the recommendations of the Ergonomie Institute of Munich. To achieve the perfect mechanical and thermal comfort that Silhouette provides, Latexco's D&I team, uses the most advanced technological features that are available in the industry today.*

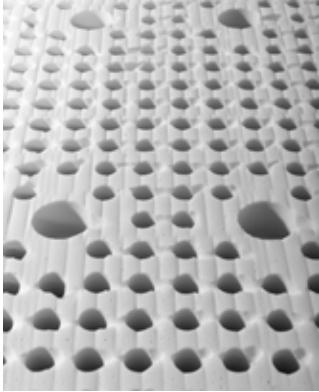
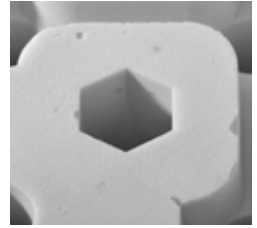
## **VENTILATION & MOISTURE REGULATION**

The contact surface is designed with a drainage pattern (see picture 1). Via this pattern excessive moisture is guided to the top-to-bottom perforations present in the silhouette mattress. The vertical top-to-bottom perforations are directly connected to the horizontal aeration channels (see picture 2 & 3). This cross-link enables a 4-dimensional pump effect. This 4D air-flow reduces excessive heat and creates a perfect micro-climate. The silhouette mattress is constantly ventilated and refreshed throughout the full core.

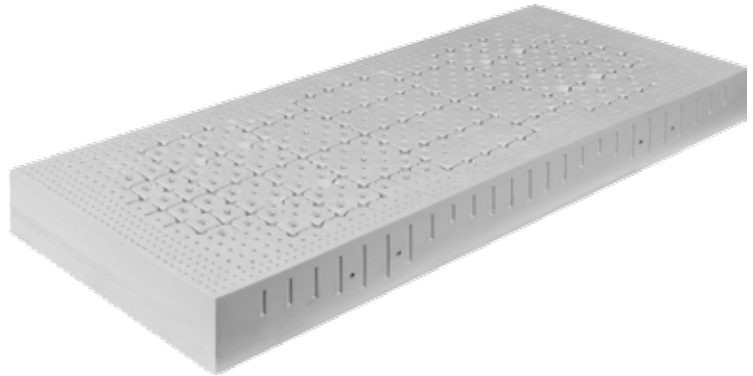


## COMFORT & SUPPORT

The silhouette mattress offers enhanced progressive support thanks to the exclusive conical design of the perforations. The soft welcoming of the contact surface is followed by a much more supportive comfort in the deeper center of the core.



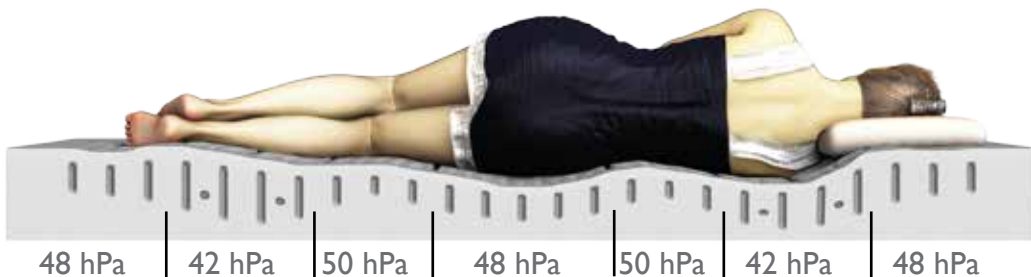
The bottom surface of the silhouette mattress is designed to maximise the contact-points with the bed base. This ensures an equal pressure distribution on the combination of the silhouette mattress with the bed base.



## ZONING

The body-shaped zoning offers wide shoulder zones. The first soft contact in the head/feet – and the lumbar is improved by the introduction of hexagonal perforations. The denser structure of the hip zone gives a stronger support to the sleepers body.

The soft/firmness levels are reflected in the side panels of the silhouette mattress.





#### Head Office

Latexco N.V.  
Sint-Amandstraat 8bis  
8700 Tielt  
Belgium  
Phone +32(0)51 40 14 31  
Fax +32(0)51 40 55 66  
info@latexco.com

Latexco Brasil  
Rua Dr. Neto de Araújo 320  
Conj. 403  
Vila Mariana - CEP 04111-001  
São Paulo - SP - Brasil  
Phone +55 11 2373 8551  
info.brasil@latexco.com

#### Locations

Latexco España SAU  
Poligono Industrial La Cuesta II, s/n  
501000 La Alumunia de Dona Godina  
Zaragoza - Spain  
Phone +34 976 811 749  
Fax +34 976 811 747  
latexco.espana@latexco.com

PT Latexco Indonesia  
JL Mayen Sungkono 5 - Blok D No 1-6  
Desa Segoromadu - Kecamatan  
Kebomas, Gresik - Indonesia  
Phone +62 31 398 0878  
Fax +62 31 398 0879  
latexco@latexco-ind.com

Latexco West LLC  
6725 8th Street  
Buena Park, California 90620  
USA  
Phone +714 522 4991  
Fax +714 522 4900  
info.latexcowest@latexco.com

Latexco Asia Pacific Pte Ltd  
161B Telok Ayer Street  
Singapore 068615  
Asia  
Phone +65 6227 3292  
Fax +65 6234 2706  
latexco@latexco-asia.com

Latexco LLC  
975 Gerrard Road  
Lavonia, 30553 Georgia  
USA  
Phone +866 528 3926  
Fax +203 245 1260  
info.us@latexco.com

FIAB Forserum AB  
Fabriksgatan 15  
S-571 78 Forserum  
Sweden  
Phone +46(0)380 294 00  
Fax +46(0)380 205 83  
mail@fiab.se