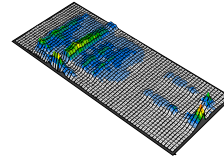
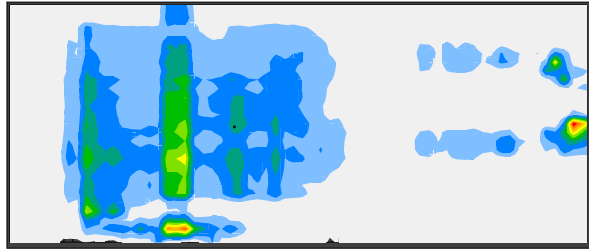


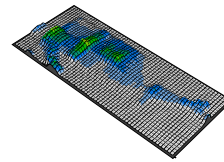
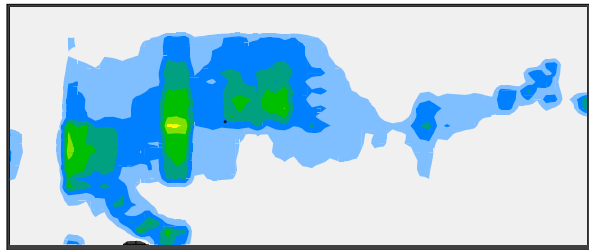
sobota, 16 kwietnia 2016 14:44:30,963



Minimum (mmHg)	0.00
Maximum (mmHg)	100.00
Average (mmHg)	10.59
Variance (mmHg ²)	166.81
Standard deviation (mmHg)	12.92
Coefficient of variation (%)	121.90
Horizontal center (cm)	36.89
Vertical center (cm)	112.98
Sensing area (cm ²)	14060.00
Regional distribution (%)	100.00

mmHg

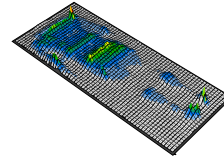
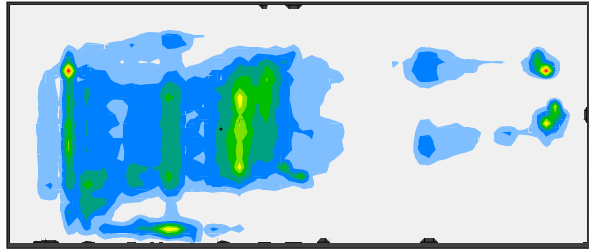
sobota, 16 kwietnia 2016 14:45:02,631



Minimum (mmHg)	0.00
Maximum (mmHg)	62.35
Average (mmHg)	9.40
Variance (mmHg ²)	151.15
Standard deviation (mmHg)	12.29
Coefficient of variation (%)	130.75
Horizontal center (cm)	39.27
Vertical center (cm)	115.88
Sensing area (cm ²)	14060.00
Regional distribution (%)	100.00

mmHg

sobota, 16 kwietnia 2016 14:46:46,095

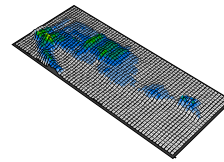


Minimum (mmHg)	0.00
Maximum (mmHg)	100.00
Average (mmHg)	10.46
Variance (mmHg ²)	179.14
Standard deviation (mmHg)	13.38
Coefficient of variation (%)	127.95
Horizontal center (cm)	36.21
Vertical center (cm)	117.21
Sensing area (cm ²)	14060.00
Regional distribution (%)	100.00

mmHg

w druga strone

sobota, 16 kwietnia 2016 14:47:41,277



Minimum (mmHg)	0.00
Maximum (mmHg)	66.14
Average (mmHg)	8.61
Variance (mmHg ²)	130.50
Standard deviation (mmHg)	11.42
Coefficient of variation (%)	132.70
Horizontal center (cm)	36.85
Vertical center (cm)	121.03
Sensing area (cm ²)	14060.00
Regional distribution (%)	100.00

mmHg

w druga strone